

Harlequin Cascade - Bolshoi Theatre Moscow



Harlequin Cascade - Studio Wayne McGregor



Harlequin Cascade - Versace



HARLEQUIN
www.harlequinfloors.com

Harlequin's range of Printed Vinyl Floors

A totally unique floor for production, touring, events or display

Whether you choose your company logo or your own design, Harlequin's printing service adds an exclusive, new dimension to your Harlequin floor.

A printed finish is available on **Harlequin Cascade**, **Harlequin Clarity**, **Harlequin Reversible** or **Harlequin Reversible Pro** vinyl floors. You can have a bespoke design or select one of our standard patterns or images.

Harlequin Clarity is specifically designed for reverse printing. The printed design is on the underside of the floor and so protected from wear and damage.

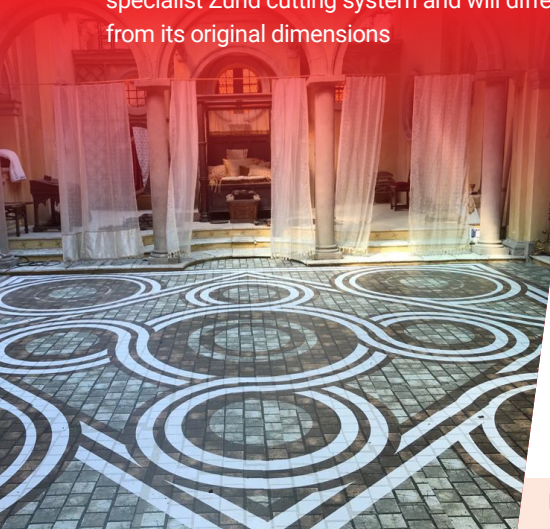
Printed vinyl flooring is perfect for theatre productions, touring performances and product launches as well as events and display.

Colour matching available

- Eco-friendly, solvent-free UV cured inks mean very rapid drying times
- Excellent ink adhesion to the substrate gives a durable, abrasion resistant surface
- The fire rating of the Harlequin floor is unaffected
- Harlequin Clarity fire rating Cfl-s1 (EN 13501-1)
Harlequin Cascade fire rating – Bfl-s1 (EN 13501-1)
Harlequin Reversible fire rating – Bfl-s1 (EN 13501-1)
Harlequin Reversible Pro fire rating – Bfl-s1 (EN 13501-1)

Artwork requirements for digital printing:

- TIFF, JPEG or PDF files min.5 MB/sqm.
- PDF's with fonts outlined (supply all fonts used)
- Colours and bitmaps CMYK (not RGB).
- Large sizes can be supplied scaled down, but must be in correct proportion to the final output.
- Pantone colours will be printed as CMYK.
- If using or supplying a bitmap image such as a TIFF or JPEG, please use high resolution at a minimum of 300dpi.
- White vinyl is usually used to achieve the best results. Other colours are available but may affect price.
- If a very pale colour is chosen as a block colour print please liaise with us regarding the CMYK print breakdowns.
- Minimum area for print 25m²
- Printed vinyl is trimmed and cut to size by a specialist Zund cutting system and will differ from its original dimensions



Harlequin Cascade

Accompanying tapes and cleaning products are available. Please contact the sales team for fixing and adhering information and advice.

If you would like further information, advice and samples please contact us on +44(0) 1892 514 888 or enquiries@harlequinfloors.com

Made in the EU. The Company reserves the right to make any variation in design or construction of the material described. Harlequin® is a registered trademark of British Harlequin plc. © Harlequin Floors 03/2019.

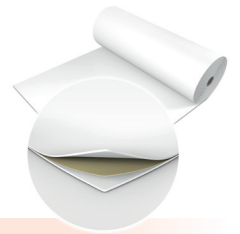


Harlequin Cascade
- Bolshoi Theatre Moscow

Harlequin can offer printing on the following vinyls:

Harlequin Cascade™

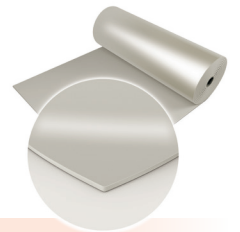
Harlequin Cascade is specified for loose-lay or permanent installation within dance institutions, dance studios, schools and theatres. It is suitable for multi-purpose use including ballet, contemporary and percussive dance, as well as concerts, exhibitions, TV and theatres.



Harlequin Cascade comes in 2m wide rolls, varying lengths, thickness 2mm.

Harlequin Clarity™

Harlequin Clarity is a durable clear vinyl flooring with an embossed texture suitable as a dance surface and for high traffic commercial use. It is specially formulated for bespoke reverse digital printing. The printed design is on the underside of the floor and so protected from wear and damage.



Harlequin Clarity comes in 1.5m wide rolls, varying lengths, thickness 2mm.

Harlequin Reversible™

Harlequin Reversible is a lightweight double-sided dance and stage floor which is particularly suited to touring due to ease of handling and portability. It is suitable for multi-purpose use including ballet, contemporary and percussive dance, as well as concerts, exhibitions, TV and theatres.



Harlequin Reversible comes in 2m wide rolls, varying lengths, thickness 1.3mm.

Harlequin Reversible Pro™

Harlequin Reversible Pro has the same features as Harlequin Reversible but with the addition of a new mineral fibre interply layer, it is now even more dimensionally stable and therefore relaxes and lays flat faster.



Harlequin Reversible Pro comes in 2m wide rolls, varying lengths, thickness 1.5mm.



HARLEQUIN
www.harlequinfloors.com